

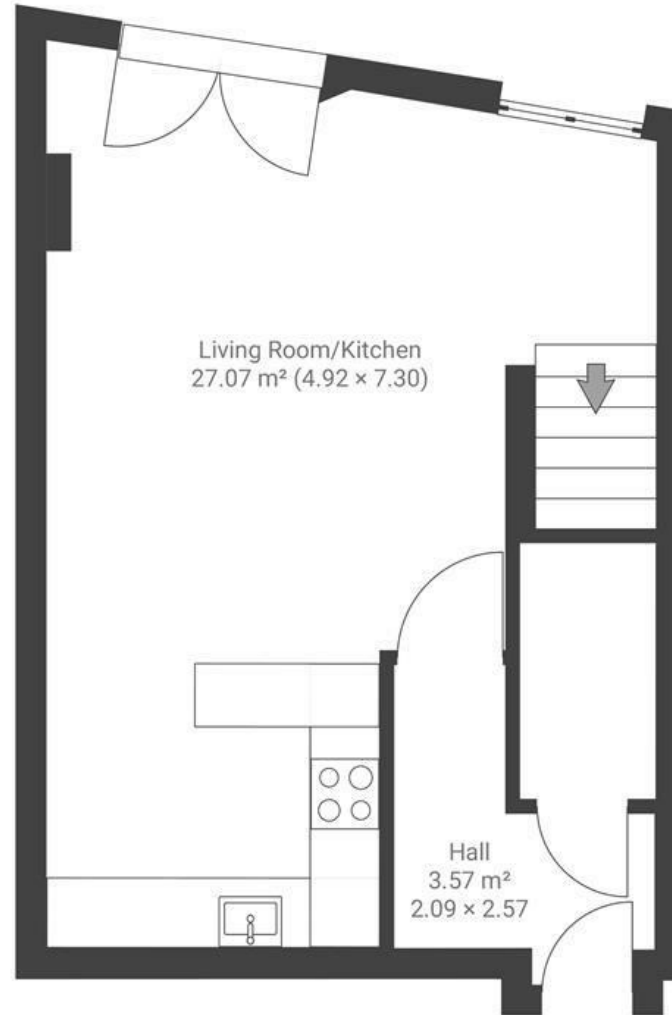
The Mill House

CITY CENTRE

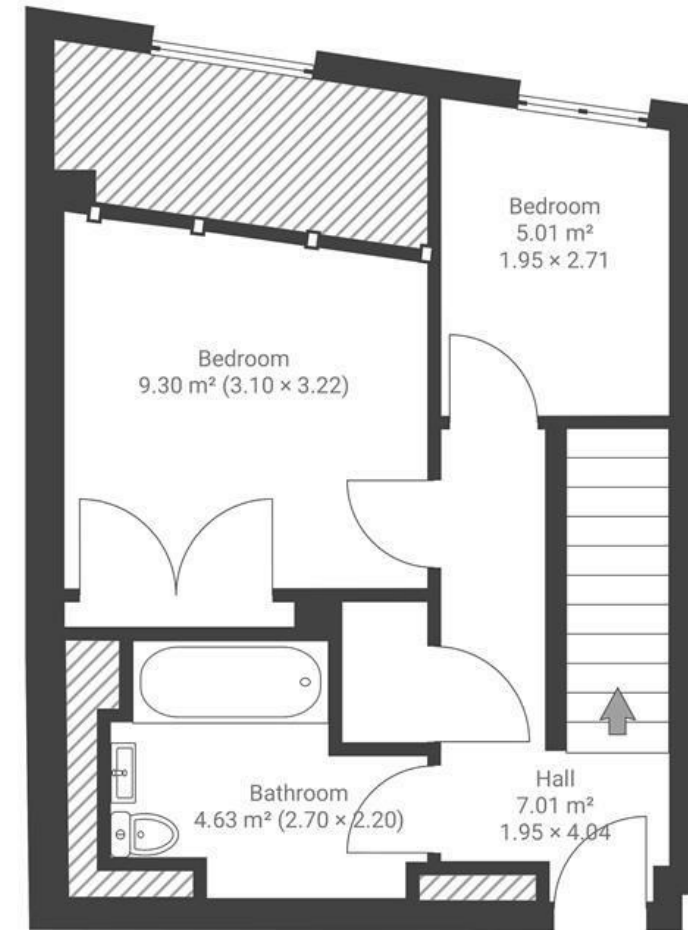
APPROXIMATE FLOOR AREA
70 SQM / 753 SQFT



GROUND FLOOR



FIRST FLOOR



Boardwalk

Ferry Street , BRISTOL

£

£335,000

z^z

2 Bedrooms



BS1 6HH



1 Bathrooms

"This flat has been perfect as a young professional couple. It is incredibly central yet very quiet. I love the light and the the view of the river and Queen's Square trees when I wake up. I have really enjoyed Bristol's vibe in the last few years thanks to this flat. This is also the place were my daughter was born, hence it will always have a special energy."

